



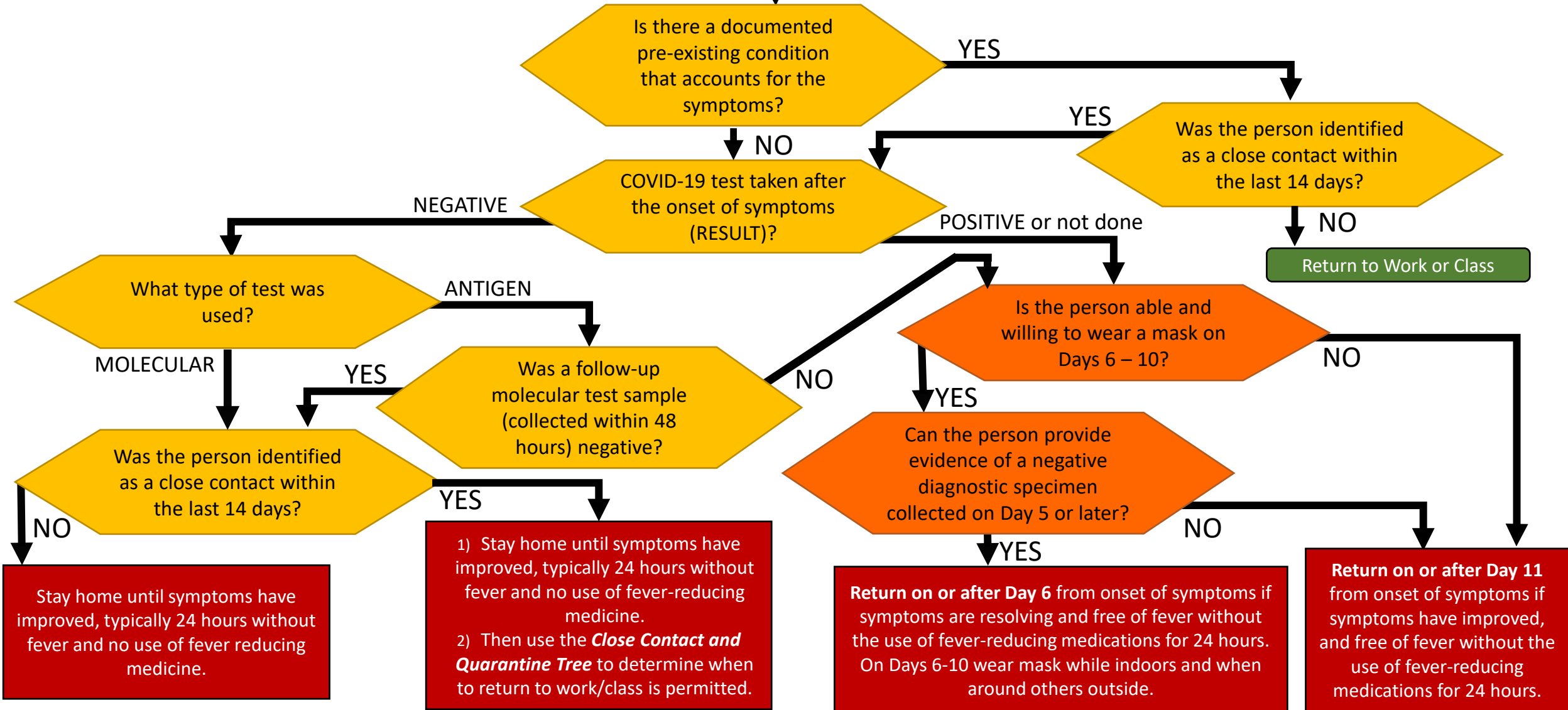
## **COVID-19 DECISION TREES**

FOR STAFF AND STUDENT REFERENCE

# Symptom and Isolation Tree for MSJC Students and Employees

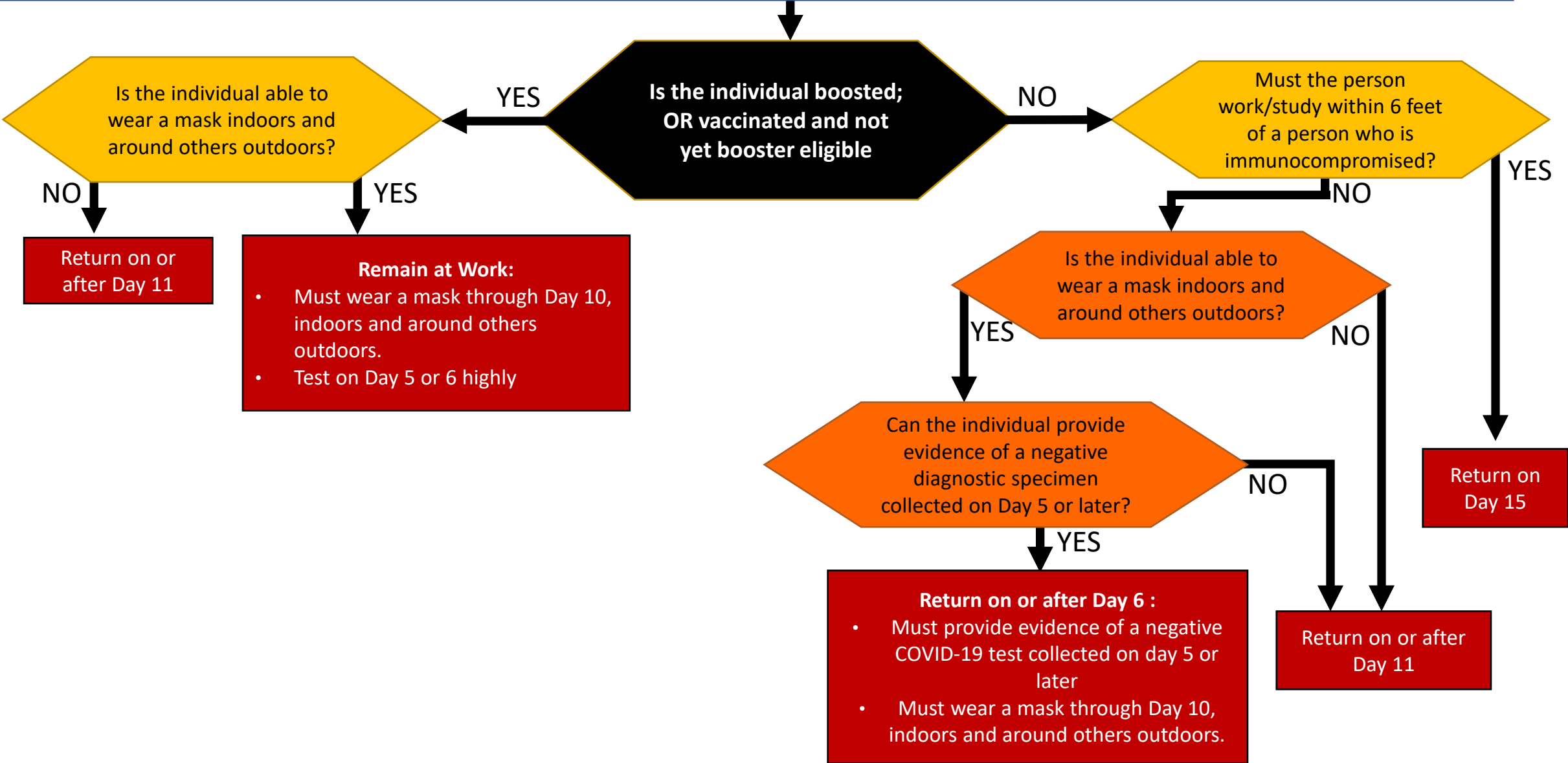
A person has one or more symptoms associated with COVID-19  
Possible symptoms include fever, chills, cough, shortness of breath or difficulty breathing, fatigue, muscle or body aches, headache, new loss of taste or smell, sore throat, congestion or runny nose, nausea or vomiting, and/or diarrhea.

Isolate the person pending a final determination as required below.



# Close Contact and Quarantine Tree for MSJC Students and Employees

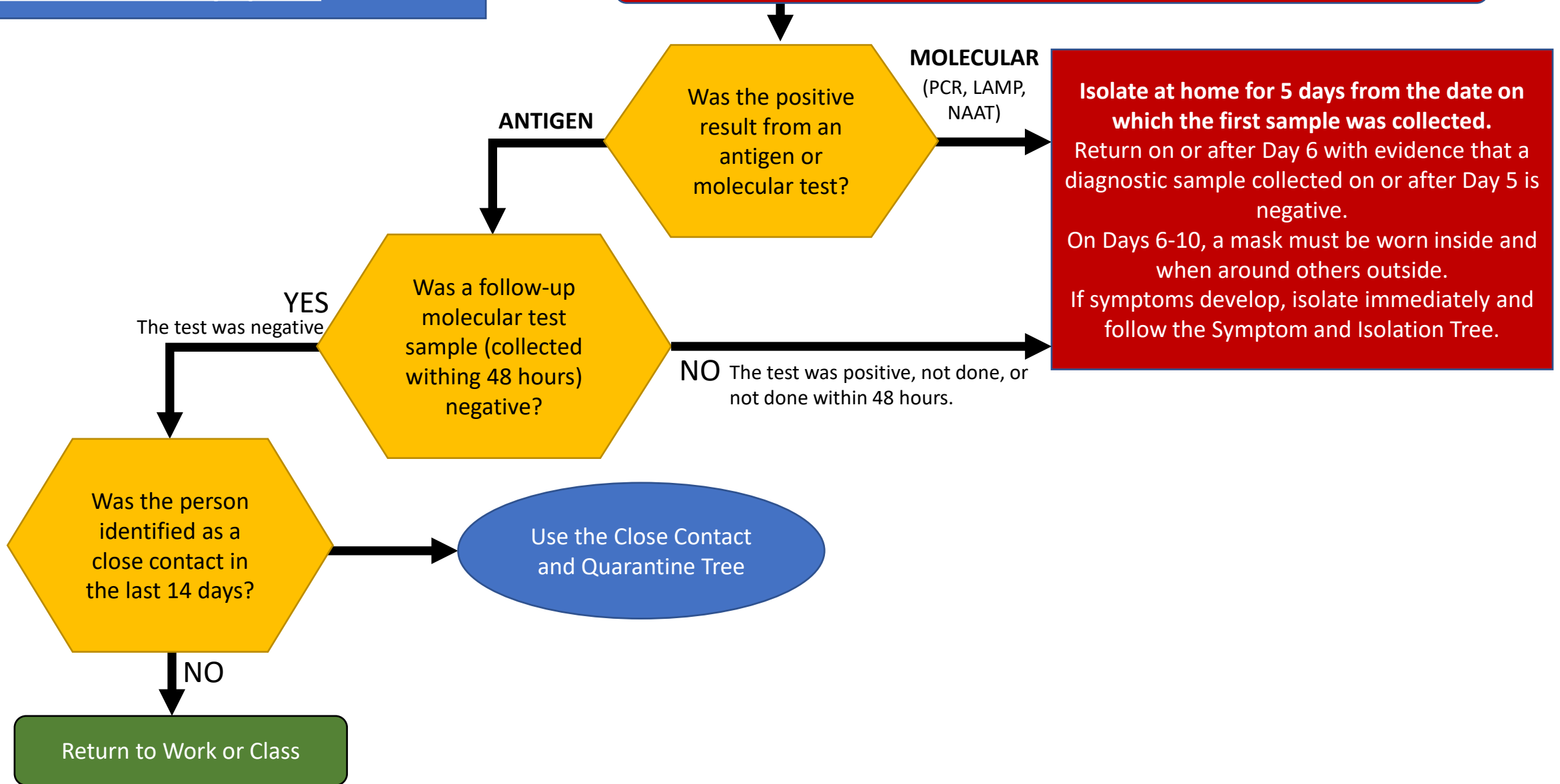
**NOTE:** Per revised CDPH guidance, “unvaccinated” includes persons who have been previously infected with SARS-CoV-2, including within the last 90 days, and those who are partially vaccinated.



# Asymptomatic Positive Tree for MSJC Students and Employees

A person has tested positive for COVID-19 and does not have symptoms

Isolate the person pending a final determination as described below



- 
- These decision trees are subject to change based on current local COVID-19 data and state and federal requirements.
  - Expect frequent updates and modifications.

Decision Trees developed by San Diego County Office of Education and Health &  
Human Services Agency  
and modified by Mt. San Jacinto Community College District COVID-19 Team.