

What is Generative AI?

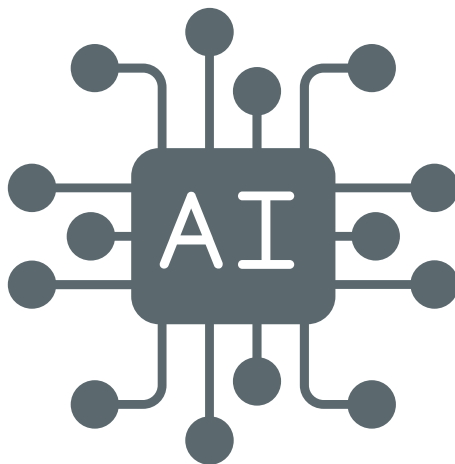
Generative AI uses Large Language Models (LLMs) to analyze vast amounts of text, identifying patterns to generate human-like responses. These models are trained on internet data, which varies in quality. Be critical of the AI-generated content, as it can include inaccuracies or biases. AI tools can be useful for sparking ideas, saving time, and improving writing, but use them wisely. Tools like ChatGPT fall under "generative AI," which can create text based on online data. This guide focuses on best practices for using generative AI for text generation.

Check in with your Instructor!

Each instructor may have different rules about using AI tools. Always check your syllabus and ask your instructor if you're unsure about AI usage.

Remember to abide by your instructor's syllabus rules regarding AI usage.

Remember, you will always be expected to showcase your knowledge by submitting your own, original work. Some instructors may allow you to use AI to help you during the brainstorming/prewriting stage of writing. If this is the case, see the following guidelines for using AI responsibly.



Potential Uses for AI:

- Brainstorming: Use AI to generate ideas or explore topics by asking specific questions.
- Outlining: Generate outlines for various projects, then refine them.
- Genre Models: Get examples of different types of writing, like literature reviews or cover letters.
- Summarizing: Use AI to summarize longer texts for a quick overview.
- Editing: AI can check grammar and suggest improvements, but review changes to ensure they fit your style.
- Translation: Translate text or audio, but be aware of potential inaccuracies.
- Transactional Communication: Draft emails, agendas, and other communication quickly.

Potential Pitfalls

- Inaccuracies: AI-generated content can be false or misleading.
- Fake Citations: AI may invent citations or misattribute quotes.
- Bias: AI can reflect biases present in its training data.
- Academic Integrity: Misusing AI can violate academic integrity standards. Always follow your instructor's guidelines.
- Privacy Concerns: Don't input sensitive information into AI tools.
- Altered Meanings: Be careful when using AI for paraphrasing, as it can change the meaning.
- Ethical Issues: AI takes others ideas and work without disclosing where the information is from.

Source:

"Generative AI in Academic Writing." The Writing Center, University of North Carolina at Chapel Hill, 2023, <https://writingcenter.unc.edu/tips-and-tools/generative-ai-in-academic-writing/>. Accessed 1 July 2024.