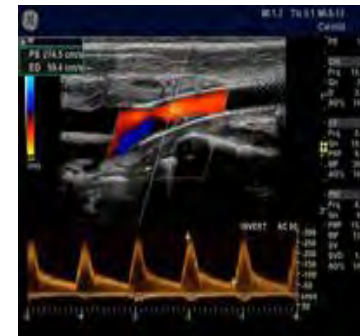
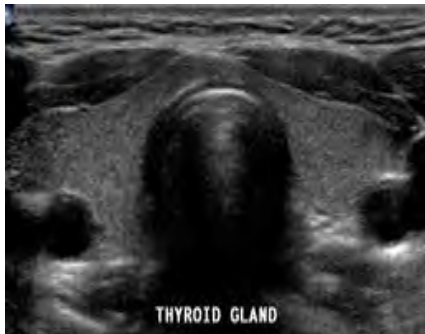


# MSJC DMS PROGRAM

ADDITIONAL INFORMATION  
[www.msjc.edu/alliedhealth](http://www.msjc.edu/alliedhealth)



# CAAHEP ACCREDITATION

## What does that mean?

- Our program is recognized as meeting the high expectations of the Joint Review Commission of Diagnostic Medical Sonographers
- The students graduating from MSJC will be more employable because they graduated from a CAAHEP Accredited school
- Students are able to take board exams 60 days prior to graduation and earn their ARDMS licensing, which makes them more employable at graduation.



Commission on  
Accreditation  
of Allied Health Education Programs

The Commission on Accreditation of Allied Health Education Programs, upon the recommendation of the Joint Review Committee on Education in Diagnostic Medical Sonography (JRC-DMS), verifies that the following program:

*Diagnostic Medical Sonography - General Concentration  
Mt. San Jacinto College-Menifee  
Menifee, CA*

is judged to be in compliance with the nationally established standards and awarded continuing accreditation on May 21, 2021.

A handwritten signature in black ink, appearing to read 'Glen Mayhew', written over a horizontal line.

Glen Mayhew, DHSc, NRP  
President, CAAHEP

A handwritten signature in black ink, appearing to read 'Christopher Kramer', written over a horizontal line.

Christopher Kramer, RDCS, RASE  
Chair, JRC-DMS

# What are the requirements necessary to apply for the AS Degree DMS Program

1. Admission to Mt. San Jacinto College. All students must have a student ID# which can be [obtained by submitting an online application to the college.](#)
2. Complete new student orientation.
3. All students are advised to meet with a college counselor prior to applying to the Diagnostic Medical Sonography Program (DMS) to review completed coursework or create an educational plan.
4. High School Diploma, GED or California Proficiency Exam
5. Acknowledgement of online viewing of [DMS Information Workshop](#)
6. Meet with a counselor to submit a [Nursing and Allied Health Evaluation Request.](#) REMEMBER to turn in request for transcript evaluation by DECEMBER 1, the year prior to application
7. Obtain a DMS application form from the [DMS website](#) and submit during the application period. APPLICATION PERIOD IS FROM MARCH 1st -15th
8. Students must pass the TEAS VI Test with a 70% or higher
9. Minimum age of 18 years
10. Must have own transportation to all affiliated hospitals

- Cumulative GPA of at least 2.5 on a 4.0 college scale in the following admission requirement courses

**ALL COURSES MUST BE COMPLETED WITH A “C” OR BETTER**

<b>ANAT 101</b>	<b>Human Anatomy &amp; Physiology I</b>	4 units.
<b>ANAT 102</b>	<b>Human Anatomy &amp; Physiology II</b>	4 units.
<b>COMM 103 ? 100</b>	<b>Interpersonal Communication</b>	3 units.
<b>PHY 100</b>	<b>Conceptual Physics or higher</b>	3 units.
<b>*MATH 105,115,140</b>	<b>Transferable Math course</b>	4 units.
<b>AH-105</b>	<b>Medical Terminology</b>	3 units

\* In order to obtain your AS-DMS degree you will need to pass MATH 105, 115, 140 or higher.

# Submit ALL OFFICIAL, college transcripts to the MSJC enrollment services


- Submit official transcripts from all colleges and/or universities attended to [officialtranscripts@msjc.edu](mailto:officialtranscripts@msjc.edu) . Transcripts must be sent directly from Colleges or Transcript Vendors. Transcripts forwarded by students will be considered unofficial.

NOTE: all foreign transcripts including high school documentation, must be evaluated by the Transcript Evaluation Services, Los Angeles, or the American Education Research Center, West Covina and then evaluated by an MSJC evaluator for course equivalency – SEE COUNSELING OFFICE and website= NACES.org

# What if I have not finished a required course by December 1<sup>st</sup>?

- \*Turn in your transcript evaluation even if you have not finished Fall semester! [Click Here For Transcript Evaluation Form](#)
- When the class is finished, and your grade is recorded mid December- the final grade will be entered on your transcript.

*All applicants to the Diagnostic Medical Sonography Program must first enroll for admission to Mt. San Jacinto College. Obtain a student number on website.*



Students are required to meet with a counselor to submit a [Nursing and Allied Health Evaluation Request](#). This request **must be completed between July 1 and December 1** to be eligible to apply for the program beginning the following Fall semester. *A copy of self service “program notes” must be submitted with the application.*

*Program requirements (prerequisite courses) must be completed with a GPA of 2.5 and grades of “C” or better. \*If you are completing course work in the Fall semester, you will turn in transcript evaluation by due date and then obtain & submit a new transcript with final grades for the March application period.*

*Correspondence regarding application with students will be via **personal and MSJC student e-mail only.***

*\*Change in address/phone must be submitted to the Nursing Office through “Student Support Hub”. Your admission will be compromised if you are unable to be reached.*

*All Students must have **one** of the following: Proof of High School Diploma, G.E.D., California Proficiency Exam, or College Degree.*

*All Students must have a Social Security Number, ITIN number, or Student Visa.*



Once accepted into the DMS Program, there will be 2 years of course work, including 3 semesters of clinical training= 32 hours a week and classes one day a week. **\*\*Clinical training may be varied with shifts possible on days, evenings and weekends.** Clinical sites are as far away as Palm Springs. You will need appropriate transportation to your clinical site. When planning expenses students should be aware they **may have to limit their hours of employment** due to extensive DMS Program requirements.

See the MSJC Financial Aid Office help with loans, grants, scholarships.

ALL STUDENTS **MUST** GRADUATE WITH A.S. DEGREE IN DIAGNOSTIC MEDICAL SONOGRAPHY.

\*IT IS **HIGHLY** RECOMMENDED THAT ALL A.S. DEGREE REQUIREMENT COURSES BE COMPLETED PRIOR TO ENTERING THE PROGRAM\* (Without AS course completion, you will be able to take registry licensing exams, but not be able to acquire your program completion & thus, not able to obtain RDMS license until course work is done)

**Mt. San Jacinto College**  
**Diagnostic Medical Sonography Program**  
**DMS CRITERIA FOR PROGRAM SELECTION**

Admission will be offered to the highest ranking applicants whose documentation supports the information provided in the application.

Criteria	Maximum Points for Each Category	Point Distribution and Explanation
1. Previous Academic Degrees, Diploma = AA/AS or BA/BS or higher	10	Points for <u>this criteria</u> are given for any prior degrees or multiple degrees. Score will either be 10 points or 0 points- multiple # of degrees do not add points
2. Licensed Healthcare work, Certified Healthcare work, or Employment documentation.  <ul style="list-style-type: none"> <li>• *See adjacent column: License, Certificate, or Employment history must be direct patient care.</li> </ul> <i>Volunteer hours do not count.</i>	10	Points for <u>this criteria</u> are given for health care licensing, certificate, or employment documentation. <b>Licenses/Certifications/Employment must have documentation</b> Score will be either 10 points or 0 points- multiple # licenses/certifications do not add points.  *Examples of Approved Direct Patient Care, including <i>but not limited to</i> : <b>Licenses/Certifications/Employment:</b> Imaging Technologist (RT): X-ray, MRI, CT, Nuclear Medicine, Mammography, CNA, LVN, RN, MA, HHA, Paramedic, EMT, Respiratory Therapist, Physical Therapist, Dental Hygienist, Phlebotomist, Doula, EKG, IHSS, Esthetician, Optician, Chiropractic assistant, Massage therapist etc.
3. GPA from Prerequisite Courses <i>Minimum GPA to apply is 2.5</i>	40	3.9 - 4.0 = 40 points 3.5 - 3.8 = 30 points 3.0 - 3.4 = 20 points 2.5 - 2.9 = 10 points
4. Completion of all General Education Units	5	Points for <u>this criteria</u> are given for completion of all General Education requirements. (Option A)
5. Approved Diagnostic Assessment Tool = Test of Essential Academic Skills (TEAS VI) or most current version <i>*Minimum score to apply is 70%*</i> <i>Study Material &amp; test registration on ATI</i> <i>website: www.atitesting.com</i>	35	Points for TEAS is a maximum of 35 points.  Score <u>90 to</u> 100% = 35 points Score <u>82 to</u> 89% = 30 points Score <u>74 to</u> 81% = 25 points Score <u>70 to</u> 73% = 20 points (The highest score on the TEAS will be accepted, limit of 2 attempts)
<b>TOTAL MAXIMUM POINTS</b>	<b>100</b>	
<b>*NEW March 2021:</b> <b>Additional 1 point for each year of a *complete application.</b>		One point will be added each year for an application that contains *all application requirements.

**Mt. San Jacinto College**  
**Diagnostic Medical Sonography Program**  
**DMS CRITERIA FOR PROGRAM SELECTION**

Admission will be offered to the highest-ranking applicants whose documentation supports the information provided in the application.

Criteria	Maximum Points for Each Category	Point Distribution and Explanation
1. Previous Academic Degrees, Diploma = AA/AS or BA/BS or higher	10	Points for this criterion are given for any prior degrees or multiple degrees. Score will either be 10 points or 0 points- multiple # of degrees do not add points
2. Licensed Healthcare work, Certified Healthcare work, or Employment documentation.  <ul style="list-style-type: none"> <li>• *See adjacent column: License, Certificate, or Employment history must be direct patient care.</li> </ul> <i>Volunteer hours do not count.</i>	10	Points for this criterion are given for health care licensing, certificate, or employment documentation. <b>Licenses/Certifications/Employment must have documentation</b> Score will be either 10 points or 0 points- multiple # licenses/certifications do not add points.  *Examples of Approved Direct Patient Care, including <i>but not limited to</i> : <b>Licenses/Certifications/Employment:</b> Imaging Technologist (RT): X-ray, MRI, CT, Nuclear Medicine, Mammography, CNA, LVN, RN, MA, HHA, Paramedic, EMT, Respiratory Therapist, Physical Therapist, Dental Hygienist, Phlebotomist, Doula, EKG, IHSS, Esthetician, Optician, Chiropractic assistant, Massage therapist etc.
3. GPA from Prerequisite Courses <i>Minimum GPA to apply is 2.5</i>	40	3.9 – 4.00 = 40 points 3.7 – 3.89 = 35 points 3.5 – 3.69 = 30 points 3.3 – 3.49 = 25 points 2.5 – 3.29 = 20 points
4. Completion of all General Education Units	5	Points for this criterion are given for completion of all General Education requirements. (Option A)
5. Approved Diagnostic Assessment Tool = Test of Essential Academic Skills (TEAS VI) or most current version <i>*Minimum score to apply is 70%*</i> <i>Study Material &amp; test registration on ATI website:www.atitesting.com</i>	35	Points for TEAS is a maximum of 35 points.  Score 90 to 100% = 35 points Score 82 to 89% = 30 points Score 74 to 81% = 25 points Score 70 to 73% = 20 points (The highest score on the TEAS will be accepted, limit of 2 attempts per application period)
<b>TOTAL MAXIMUM POINTS</b>	<b>100</b>	
<b>*NEW March 2022: Additional 2 points for each year of a *complete application.</b>		Two points will be added each prior year for an application that contains *all application requirements. (current yr does not add point)

# TEAS Test (Test of Essential Academic Skills)

Students must pass the TEAS VI or VII Test with a 70% or higher. Students are allowed 2 attempts per application period with highest score accepted.

It is the same test for both Nursing and Allied Health.

This test evaluates basic academic skills in reading, math, science, English, and language usage. See handout or website (Note: nice to see they have DMS listed under Category R along with Biomedical engineers and Radiation technologists ;)

# ATI website

- Register by creating an account online through ATI Testing:  
<https://www.atitesting.com/home.aspx>
- You will need to take the exam at a testing center. (MSJC does not to proctor TEAS exams on campus).

# Complete Application checklist:

1. Copy of the nursing and allied health evaluation email that you received stating eligibility to apply and a copy of Program Notes that states your GPA, general ed. completion, etc.
2. Copy of High School Diploma or GED or California Proficiency Exam or College Degree
3. Copy of In-person **or** Live, on-line DMS Workshop signed acknowledgement **or** Self-review of DMS Online Power Point presentation with self-acknowledgement.
4. COMPLETED DMS APPLICATION
5. Copy of TEAS test results
6. Copy of any Medical licenses, Certificates, or direct patient care job description and proof of employment.

## MAJOR REQUIREMENTS (1<sup>st</sup> Semester - Fall)

DMS 100	Fundamentals of Diagnostic Medical Sonography		2			
DMS 101	Pathophysiology		3			
DMS 103	Sonography Techniques in Patient Care		3			
DMS 125	Ultrasound Physics/Instrumentation I		2			

**10**

Less than 12 may affect Financial Aid-check with Fin. Aid office

## MAJOR REQUIREMENTS (2<sup>nd</sup> Semester - Spring)

DMS 102	Medical Ethics		3			
DMS 104	Clinical Observation		2			
DMS 110	Sectional Imaging		2			
DMS 120	Abdomen Scanning		3			
DMS 122	Ultrasound Pathology I		1.5			
DMS 135	Ultrasound Physics/Instrumentation II		2			

## MAJOR REQUIREMENTS (Summer)

DMS 114	Clinical Experience I		5			
---------	-----------------------	--	---	--	--	--

**MAJOR REQUIREMENTS (1<sup>st</sup> Semester - Fall) 10 Units**

DMS 100	Fundamentals of Diagnostic Medical Sonography		2			
DMS 101	Pathophysiology		3			
DMS 103	Sonography Techniques in Patient Care		3			
DMS 125	Ultrasound Physics/Instrumentation I		2			

**MAJOR REQUIREMENTS (2<sup>nd</sup> Semester - Spring) 13.5 Units**

DMS 102	Medical Ethics		3			
DMS 104	Clinical Observation		2			
DMS 110	Sectional Imaging		2			
DMS 120	Abdomen Scanning - Lab		1.5			
DMS 122	Ultrasound Pathology I - Lecture		3			
DMS 135	Ultrasound Physics/Instrumentation II		2			

**MAJOR REQUIREMENTS (Summer) 5 Units**

DMS 114	Clinical Experience I		5			
---------	-----------------------	--	---	--	--	--



<b>MAJOR REQUIREMENTS (3<sup>rd</sup> Semester - Fall)</b>					
DMS 124 Clinical Experience II		10			
DMS 130 OB/GYN Scanning		3			
DMS 132 Ultrasound Pathology II		1.5			
DMS 140 Introduction to Vascular Scanning		2			
<b>MAJOR REQUIREMENTS (4<sup>th</sup> Semester - Spring)</b>					
DMS 134 Ultrasound Seminar		2			
DMS 136 Clinical Experience III		10			
The Sonography courses must be taken in a specific sequence. Students must attain a minimum grade of 75% "C" or above in all required courses in order to obtain the certificate.					
<b>Additional Courses For Associate of Science Degree in Diagnostic Medical Sonography:</b>					
<b>General Education Option A</b>					
<b>Review the MSJC catalog with a Counselor to determine courses</b>					

# Additional Associate Degree and Requirements from Option A: [Click Here to view Option A](#)

<b>US History or Political Science</b> (area B1)	3 Units
<b>Social &amp; Behavioral Sciences</b> (area B2)	3 Units
<b>Humanities</b> (area C)	3 units
<b>Multicultural Gender Studies</b> (area F)	3 Units

**DEPENDENING ON YOUR CATALOG RIGHTS, AREA C & F MAY DOUBLE COUNT (SEE THE MSJC GENERAL EDUCATION BREADTH PATTERN)**

<b>English 101</b> (area D1)	4 Units
<b>Physical Education &amp; Healthful Living</b> (Area E1)	3 Units
<b>Math 105, 115, 140 or higher</b> (area G)	3 Units

**Please see your counselor for more advice on completion of your AS Degree requirements**

**Upon completion of the Medical Sonography Program, the student:**

- 1. Is prepared to take the ARDMS SPI Physics & Instrumentation and General Specialty exams of Abdomen/small parts, and OB/Gyn exams.**
- 2. Will have knowledge of proper ultrasound equipment use.**
- 3. Can perform abdomen, small parts, obstetrics, gynecology and general vascular ultrasound exams**
- 4. Will use effective communication with staff, patients, and physicians**
- 5. Will understand and implement HIPPA laws for all patients.**
- 6. Will demonstrate professional and ethical behavior in the workplace.**

# Recommended Web Sites

[CAAHEP.ORG](http://CAAHEP.ORG)

[ARDMS.ORG](http://ARDMS.ORG)

[AIUM.ORG](http://AIUM.ORG)

[SDMS.ORG](http://SDMS.ORG)

[SONOWORLD.COM](http://SONOWORLD.COM)

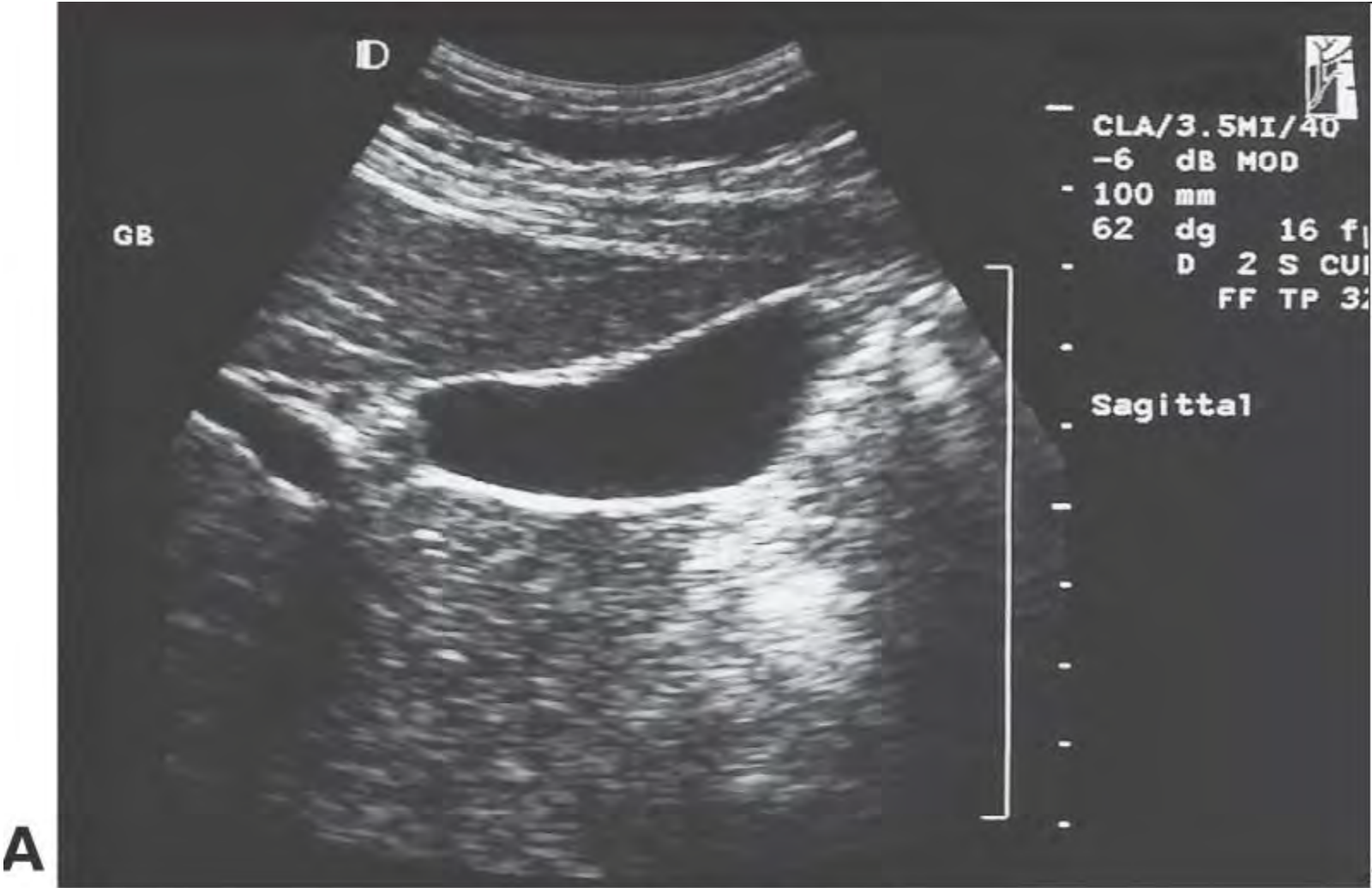
[ULTRASOUNDLINK.NET](http://ULTRASOUNDLINK.NET)

# So you want to be a Sonographer?

- <http://www.sdms.org/resources/educational/so-you-want-to-be-a-sonographer>



# Gallbladder



# Gallstones

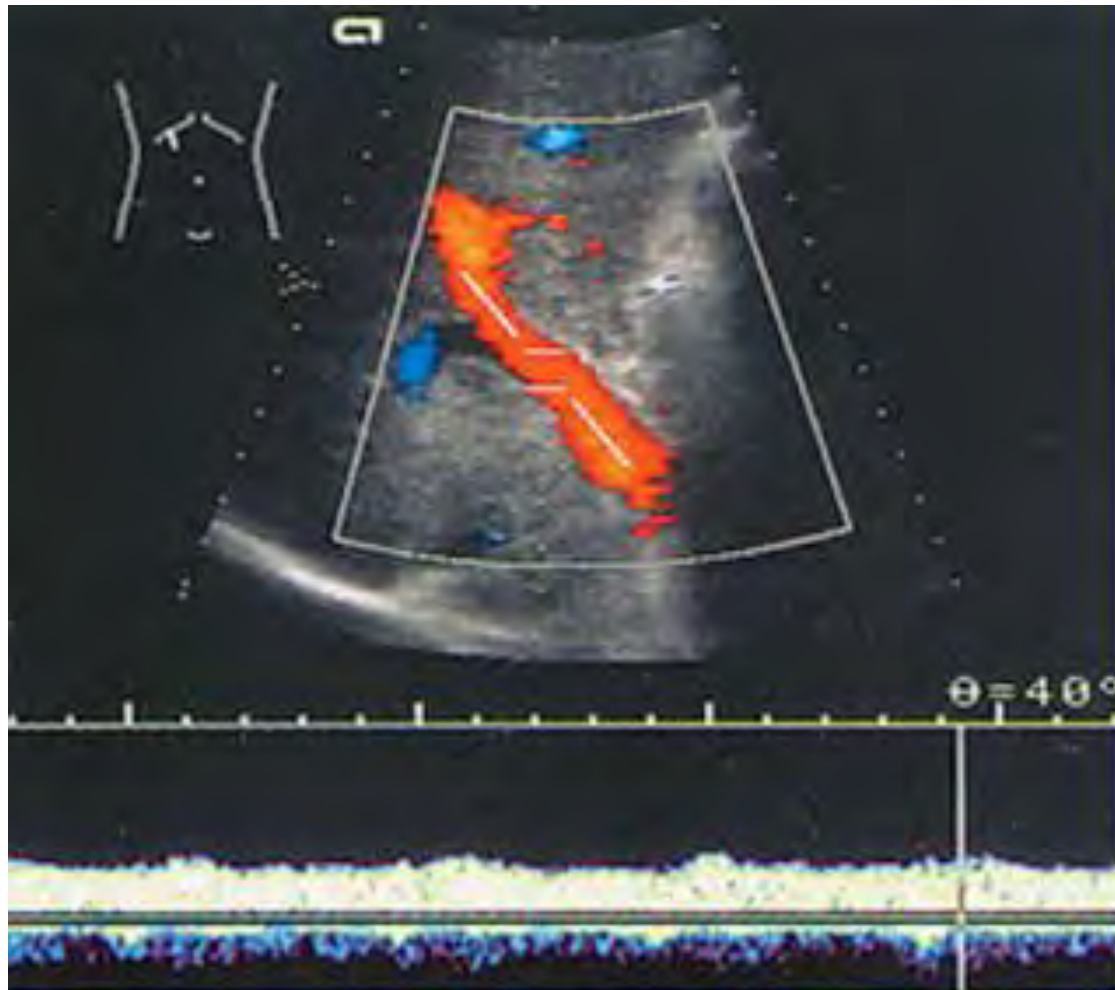


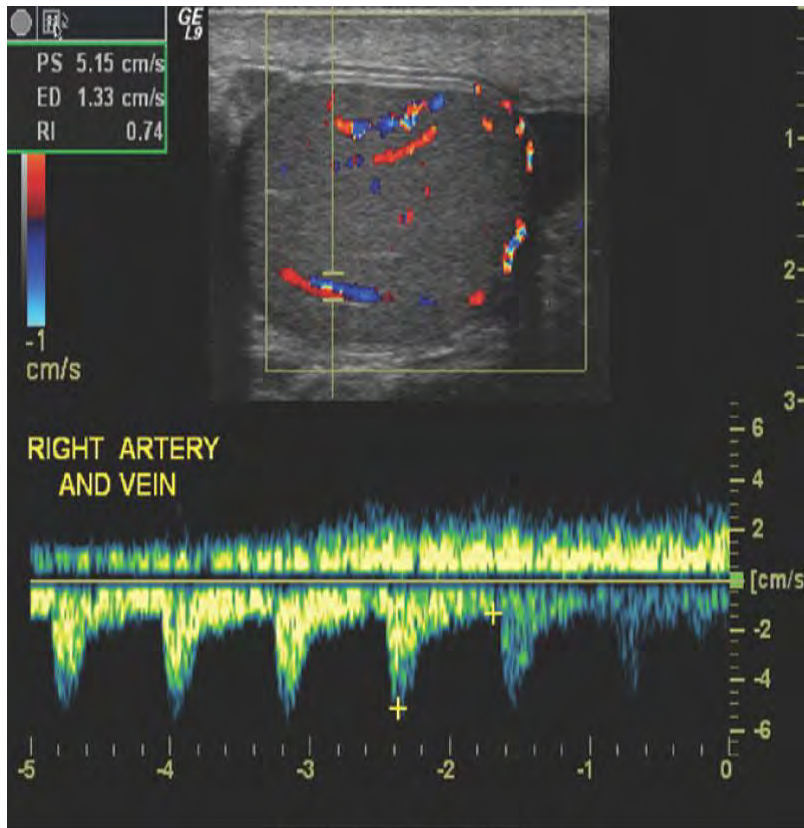


# Main abdominal vessels: Aorta and IVC



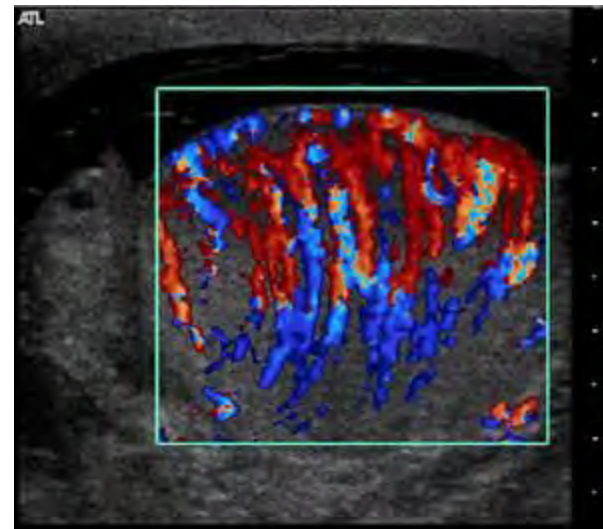
# Color Doppler flow of portal vein in liver



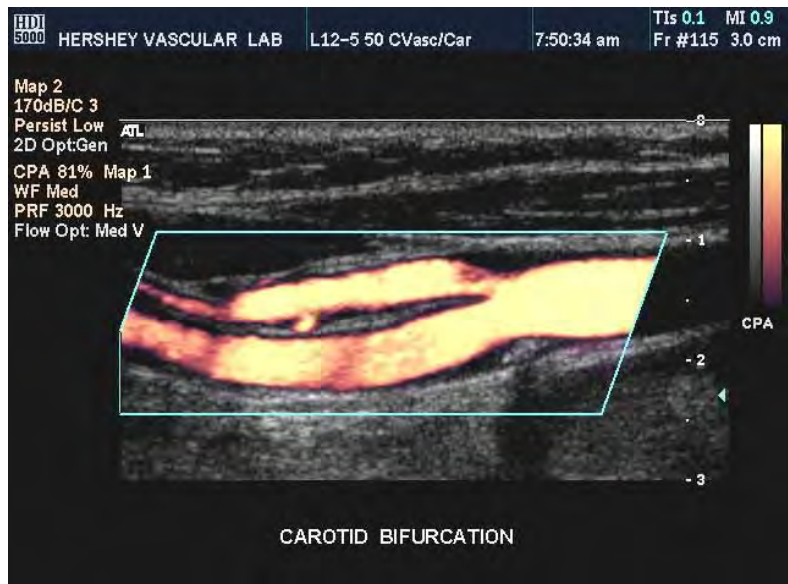
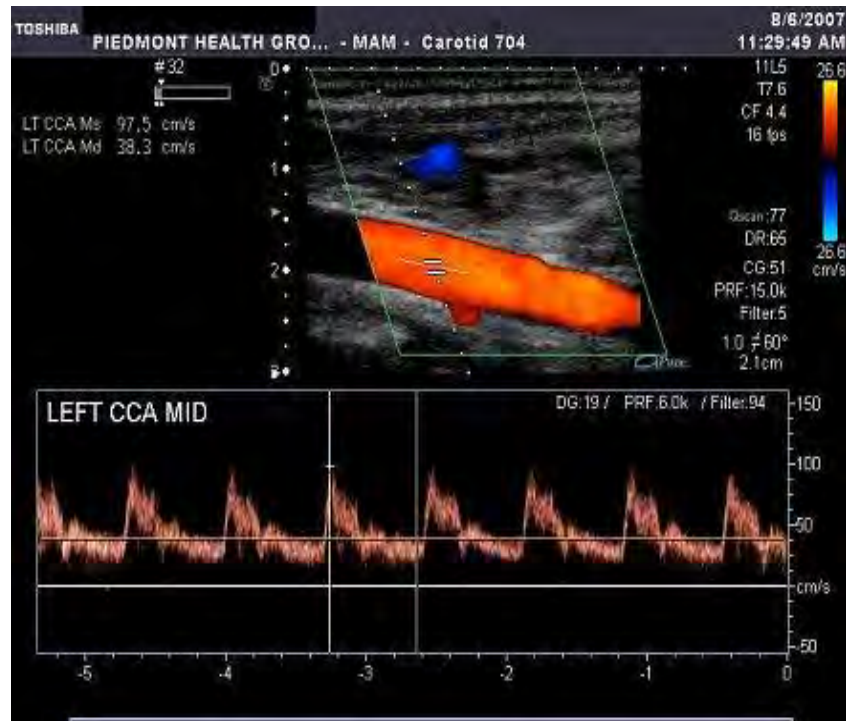
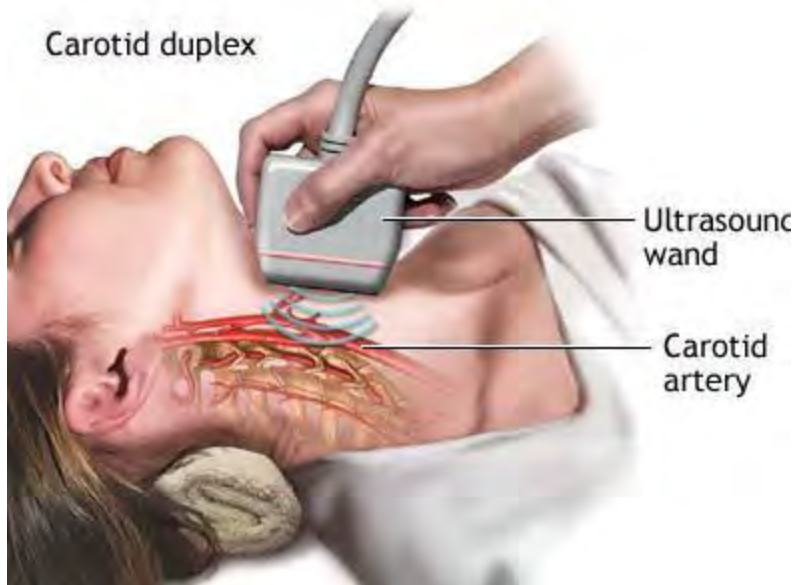


Copyright © 2006, 2001 by Mosby, Inc. an affiliate of Elsevier Inc.

## Testicular Ultrasound with Doppler

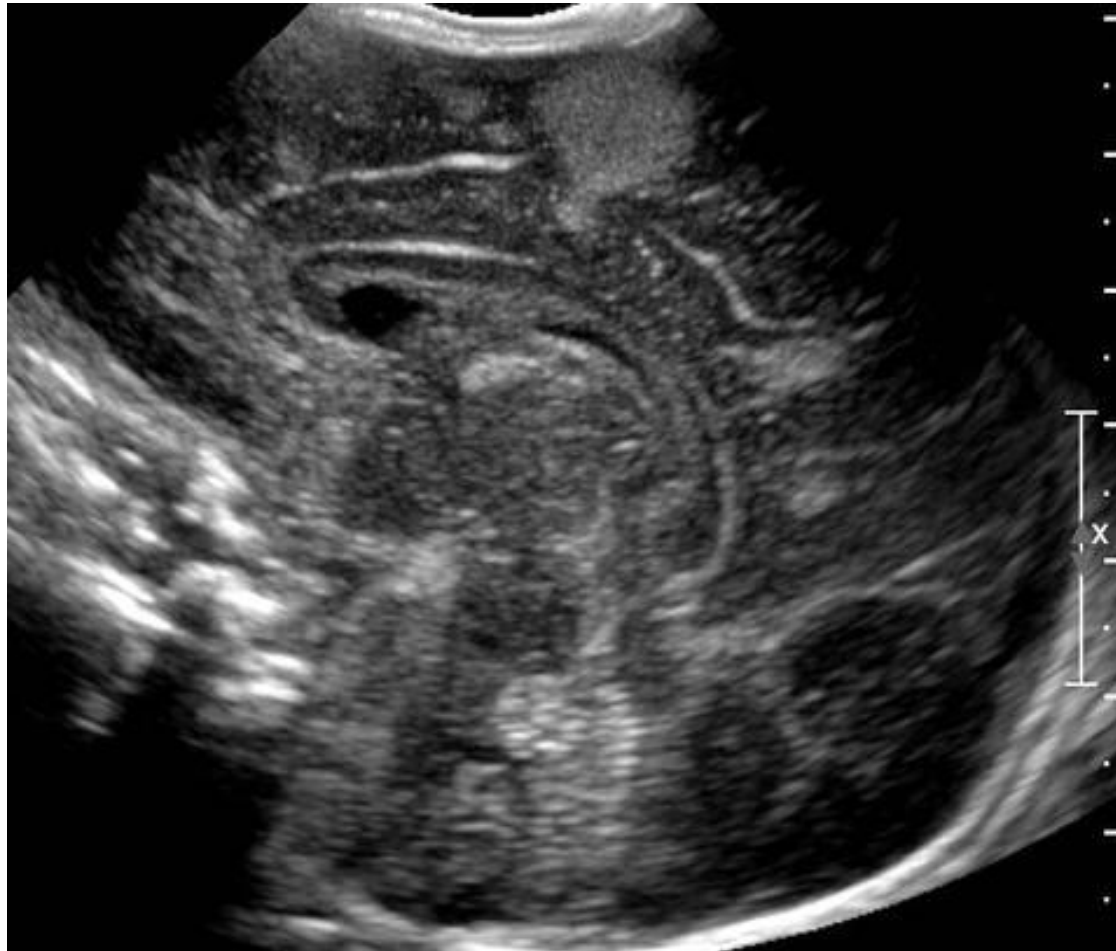


# Carotid duplex

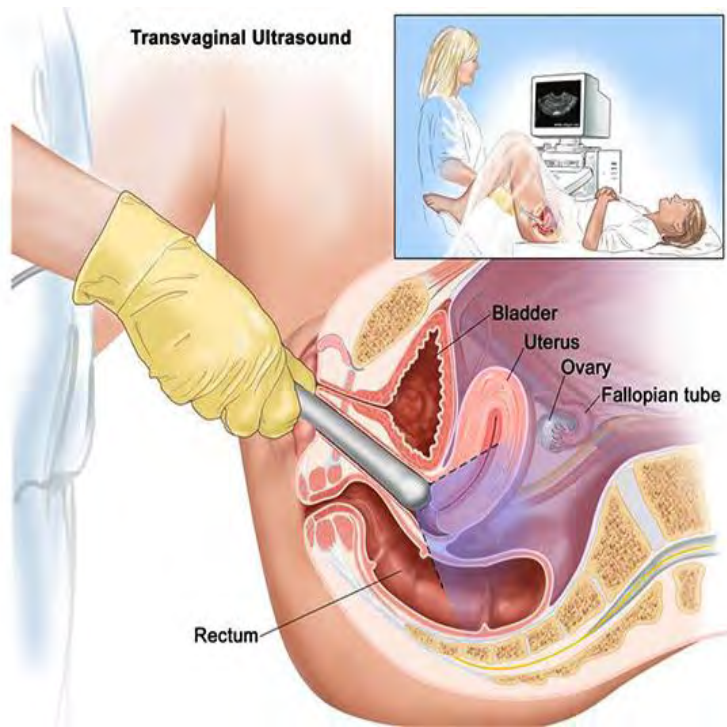


## Carotid Duplex Scanning

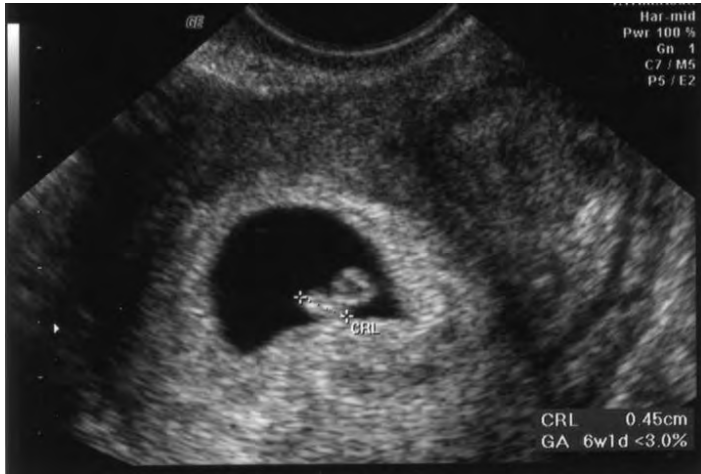
# Neonatal brain (scan through fontanel of cranium)



# Endovaginal Sonography



# First and second trimester OB

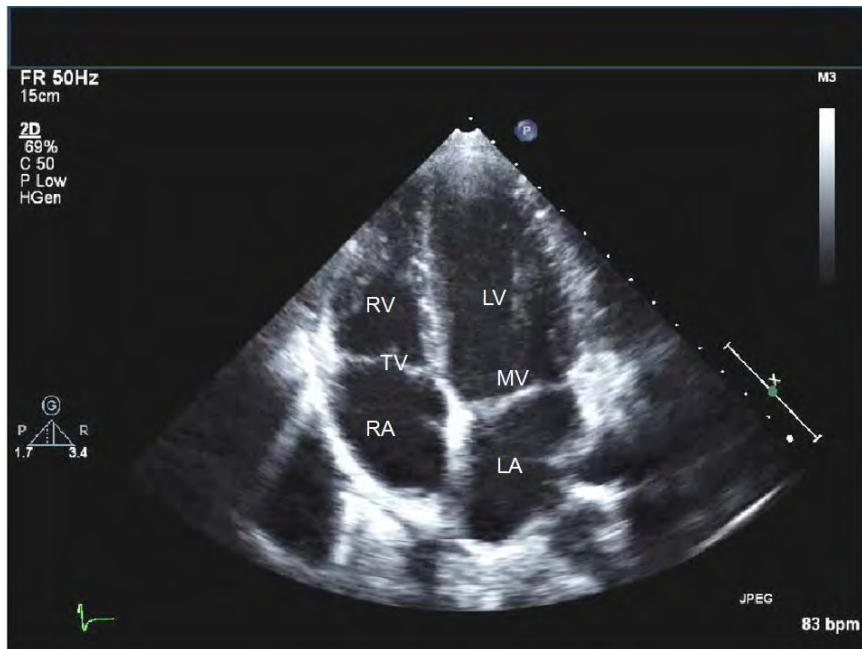




- FETAL NOSE, MOUTH AND CHIN



# Echocardiography



# A reason for this workshop...

Often prospective students explore a sonography program hoping to fulfill their dream of taking cute baby photos for a pregnant mother.

This can be part of your daily career demands, but there are also the demands of a healthcare worker who must care for people both physically and mentally.

# What does a Sonographer (really) do?

- “Really the only somewhat bothersome thing about this practice is how misunderstood it is, it may look like all we do is take pictures, but it’s not as easy as it may seem. We can detect gallstones, cysts, masses, cancer, and [scan for] abnormalities with a fetus.”

– **Marie C**

# Echocardiography TEE= (transesophageal echocardiogram)

- <https://www.youtube.com/watch?v=9q91T3IQbK0>

